

Hollywood Glam Portfolio 2012



The purpose of this portfolio is two fold!

1. It allows you to book both initial appointments with sharp women you would like to feature as your “Glamour Model”
2. It allows you to book second appointments at your Skin Care Parties for the same purpose!

Simply use the Makeup Artist Looks from each Look Book and those on the Mary Kay Website for each quarter of the year!

You can choose to have as many models for each look as you like. Why not set your goal to have 4 Reality Models for each of the 8 looks featured?

Put the pages in page protector sheets and the “Cover Page” in the outside pocket of a 3 ring binder! Take it with you everywhere looking for your models and take to your skin care parties to allow them to pick out the look they will try at their 2nd facial/color makeover!

Hollywood Glam Makeover Looks

Model's Name _____

Skin Tone / Foundation Type _____

Eye Shadows _____

Eye Liner _____

Cheek Color _____

Lip Liner _____

Lipstick/Lip Balm _____

Lip Gloss _____

NOT-SO-SMOKY EYES



Gold Coast from Lash Line to Brow

Hazelnut in crease and along outside edge of eyes

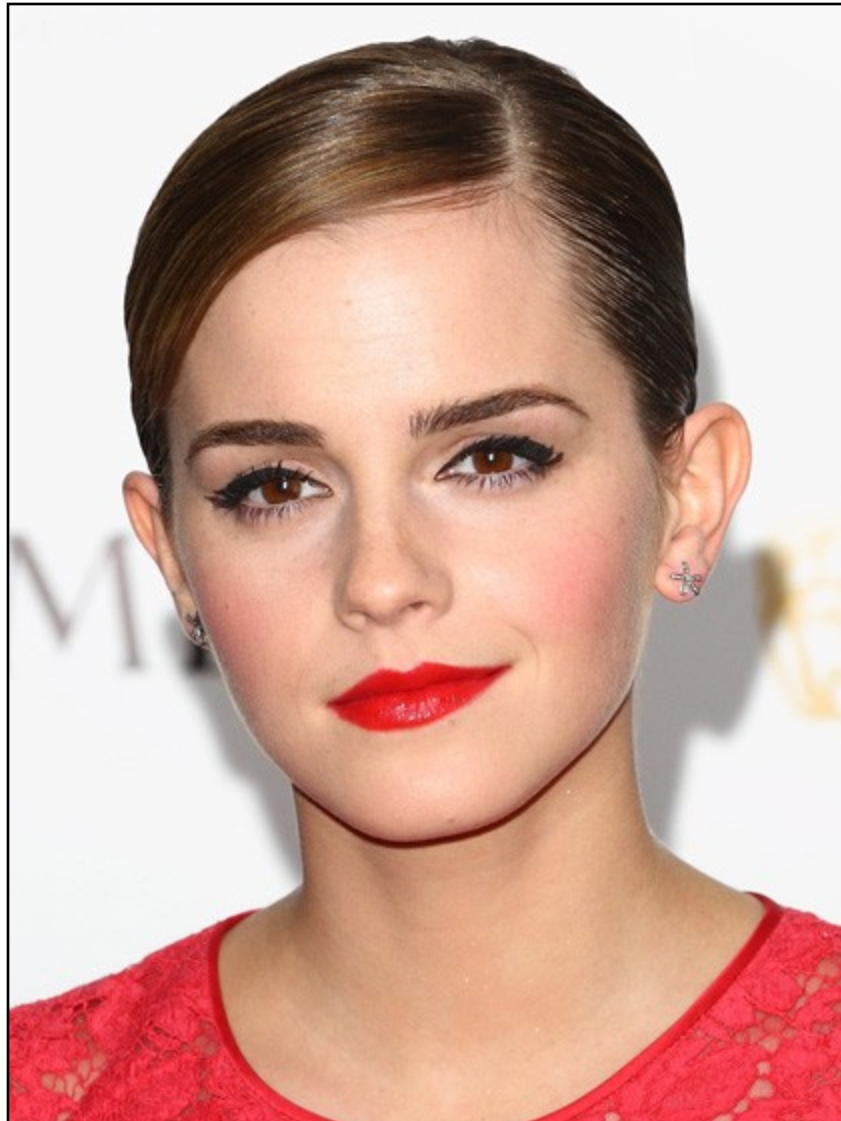
Truffle along outer edge of eyes blend upwards toward crease

Line with **Deep Brown Eye Liner** smudge with brush, use lots of **Ultimate Mascara** and follow with **Gold Coast** just below lower lashes and dot at inner corner of eyes!

Strawberry cream cheek color

Apply **Neutral Lip liner** and top off with **Pink Luster Lip Gloss**

RED LIPS AND PINK CHEEKS



Red lips are nothing new, but what makes Emma Watson's look so modern is pairing them with pink cheeks!

Apply **Sweet Cream** from lash line to brow

Sweep **Hazelnut** in crease blending towards brows

Apply **Black eye liner (in gel, liquid or pencil)** to top lid only blend with **coal** shadow

Apply **Lash Primer** and a generous amount of **Ultimate Mascara in Black** (2 coats)

Sweep **Strawberry Cream** cheek color

Top off with **Neutral Liner** and **Really Red** lipstick blot then add a touch of **Icicle Gloss**

SHADOWY CAT EYES



Mila Kunis's diffused cat eyes somehow look both soft and bold

Apply **Golden Vanilla** from lash line to brow

Sweep Hazelnut across lid and up into crease

Apply **Espresso** along lash line and outer edge of eye blending up

Rim the inside of the eyes with **Black Liner** smudging along lower lash line.

Lightly dip an angled eye-shadow brush into a **Espresso** shade and swipe on top.

Blend with a fluffy brush and pile on tons of **Ultimate Mascara**.

Use **Sunny Spice** Cheek color

Neutral Lip Liner with **Au Natural Lip Gloss**

ROSY LIPS



This jolt of bright pink lipstick on her lips officially gets attention!

First exfoliate lips with **Satin Lip Mask**. Top with **Satin Lip Balm**

Get this look with **Sweet Cream** on lids and arch of brow

Apply **hazelnut** in crease

Line upper lids with **dark brown liner**

Followed by **lash primer** and 2 coats of **ultimate mascara**

Apply **Citrus Bloom** on cheeks

Apply **Pink Passion** Lipstick Make sure you pat and blot with a tissue so the color doesn't look too heavy before topping with a **Satin Lip balm**

GLISTENING SHADOW



Scarlett Johansson's sparkle-flecked shadow might be sheer, but it definitely doesn't go unnoticed.

Use **Silky Caramel** from lash line to brow then sweep **Gold Coast** on top

Line the Upper Lashes with a thin layer of **Deep Brow Eye liner**

Apply **Hazelnut** Shadow to outer corners of the eyes and along lower lash line

follow with **lash primer** and **ultimate mascara**

Apply **Shy blush** cheek color

Top off with **Mango tango** lip gloss (use **Timewise Lip Primer** to prevent feathering)

WINGED LINER AND RED LIPS



It's so classic, it's almost boring—until you see it well done, like on drop-dead glamorous Zoe Saldana.

Apply **Honey Spice** on eyelid and arch of brow bone

Sweep **Cinnabar** from lash line up and into crease

Apply **Chocolate Kiss** with fluffy brush as a wash all over eye area

Paint a black line along the upper lashes with **Black liquid liner** or **Black Gel Liner**
The line should get thicker as it moves toward the outer corners.

Golden Copper Blush

The finishing touch: Smooth a bit of **concealer** around the cupid's bow for precision. It completely makes lips pop and top with **Red Passion** Lip Gloss

SILVER METALLIC SMOKY EYES



Correct placement of Silver Shadows makes eyes look bigger and brighter like Jessica Alba's smoldering metallic eyes

Define the inner rims of eyes with **Black liner** smudging at the corners.

Dust **Granite Shadow** across lids, blending upward towards brows and along lower lid

Sweep **Hazelnut** into the crease and on outer lids

Top with 2 coats of **Ultimate Mascara**

Finish off with **Polished Stone** on inside corner of eyelids and inside of lower lids

Apply **Citrus Bloom** cheek color

Neutral liner and **shell** lipstick topped with **pink sateen**

ALL-OVER BRONZE



Minka Kelly's radiant complexion looks effortlessly sexy—and it is actually super easy to achieve.

Apply **Honey Spice** from lash line to brow

Sweep in **Hazelnut** topped with **truffle** in crease

Line upper lashes with **deep brown** and lower lashes with **bronze** liner

Apply **Sheer Bliss Cream Blush** and **Desert Sun Bronzer** on top of cheek bones

Apply **Neutral** liner and **Apricot Glaze** lipstick top with **Au Natural** and voilà—you've got a serious glow going!

TWO-TONE EYES: GREEN



Your friends will be green with envy when it comes to copying Eva Mendes's style: A flash of bright liner is a fun way to make your eyes the center of attention.

Apply **Moonstone** shadow on lid to brow bone

Apply **Hazelnut** in crease

Line the top lid in **black liner** and draw a very thin line along the bottom lashes

Apply **Rich Jade** or **Teal Gel** Liner on top of black to add a rich pop of color

Citrus bloom blush on cheeks

Apply **Pink Satin** lipstick and **Pink Parfait** gloss.