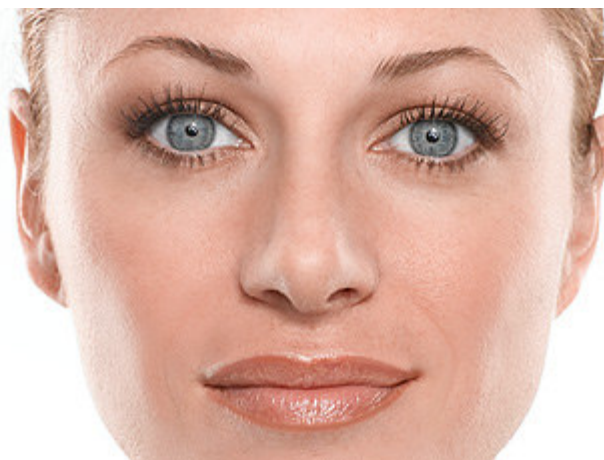


CLOSE-SET EYES

This look includes:

- Moonstone Eye Color
- Hazelnut Eye Color
- Vintage Gold Eye Color
- Deep Brown Eyeliner
- Sunny Spice Cheek Color
- Dusty Pink Lip Liner
- Apricot Glaze Creme Lipstick
- Melon Sorbet Lip Gloss
- Black Ultimate Mascara™
- Mary Kay® Compact
- Compact Cheek Brush
- Eye Applicators

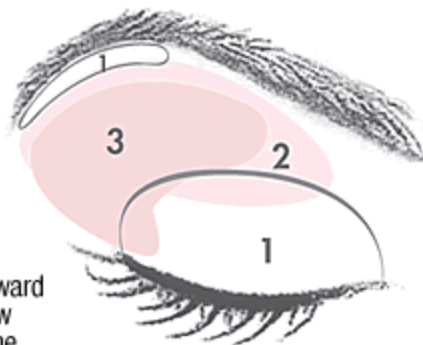


Great Tips for Gorgeous Eyes!

Close-Set Eyes

Eyes that are less than one eye width apart.

- 1** First, apply the highlighter shade to the brow bone and lid. Also apply the highlighter shade to the inside corners of the eye to help the eyes appear farther apart.
- 2** Next, starting at the outer corner of the crease, bring the midtone shade toward the inside corner to the brow but not all the way over to the nose.
- 3** To finish, sweep the accent shade across the base of the upper lashline and up into the outer area of the crease. Sweep the accent shade underneath the lower lashline for definition. Stop the color before you get to the inside corners.



Highlighter – The lightest shade used in an eye look. It enhances eye features such as the brow bone and inner corner of the eye.

Midtone – The medium shade used in an eye look. For a day look, this shade is usually neutral.

Accent – The darkest shade used in an eye look. It adds a pop of color and depth to the eye.

MARY KAY®